

STUDIO Makeup Sheet

Creating a base

Juniors and Senior 1 will not need any foundation or powder base, just concealer if necessary. Senior 3 and above, please use own choice of foundation/powder/highlighters etc. Please however consider your costumes, makeup is an awfully difficult stain to remove and also you will be hot and sweaty during a performance, a heavy base will soon come off.

All: Use a concealer to hide dark circles and blemishes if necessary.

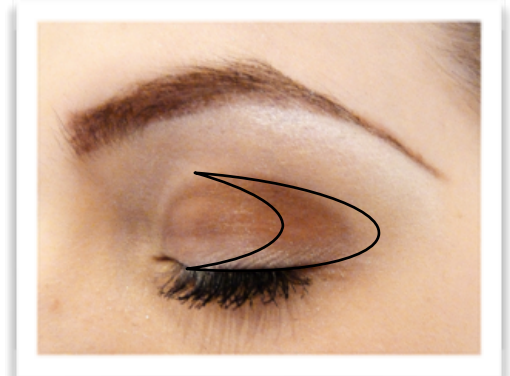
Enhance the natural shape of the brow with a brow pencil and lengthen the ends a little way.

Eyes

First colour the lid and some of the arch with the beige/grey tone, then highlight under the whole brow with white. The proportions of colour should be influenced by the distance between your lid and brow. Smaller eyes will need less colour and more white to make them appear bigger. Then use the darker shade (either brown or black) to fill a letter "C" shape (shown over the image). Blend the shades with an eye brush.

Add mascara to the top and bottom lashes.

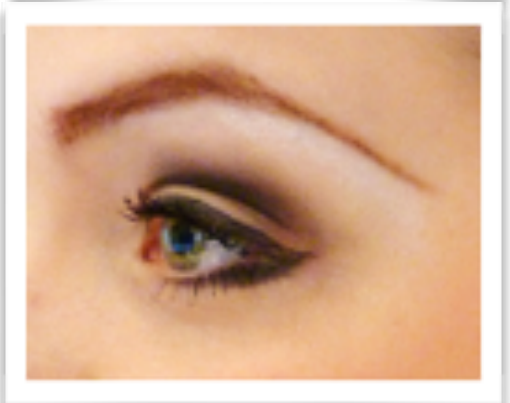
Senior 3, 4 and Premiers should also apply liquid eyeliner and a little of the darker shade of shadow under the eye at the far corners only. Please do not flick the ends of your eye-liner.



Cheeks & Lips.....

Suck in cheeks to fully expose your cheekbones and colour from the rounded part upwards towards the edge of the eye.

We use an excellent lipstick which will stay put for 24hrs, you will need good makeup remover to take this off at the end of the day. Apply the red first, do not rub the lips together as you would with regular lipstick, allow 30 seconds to let it dry and then go over with the balm.



Makeup lists

Junior 1,2,3,4 & Senior 1

- Concealer
- Brow pencil in own colour
- Eyeshadows in brown, beige and white
- Black mascara
- Blusher in pink tone



- Studio Lipstick in No: 510 Red Passion (Maybelene Superstay)
- Various brushes and applicators
- Makeup remover/wipes

Senior 2,3

To the Junior list please add:

- Foundation (for the stage this should be one shade darker than normal)
- Powder - this will help seal your foundation
- Highlighters - use sparingly
- Black liquid eye-liner

Senior 4, Premier

To the above lists please add:

- Eyeshadows in grey, and black
- False eyelashes